

everest biolabs

Automate the tedious.
Focus on discovery.

Ascent

Automated column-based SEC for EV isolation



Run 1–8 columns
in parallel



Walk-away operation
with Column Saver

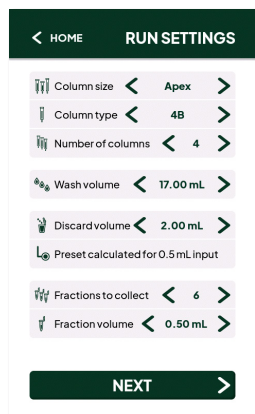


Compatible with
multiple SEC columns



Automated fraction
collection and washing

Ascent elevates EV isolation workflows.



Programmable fraction collection

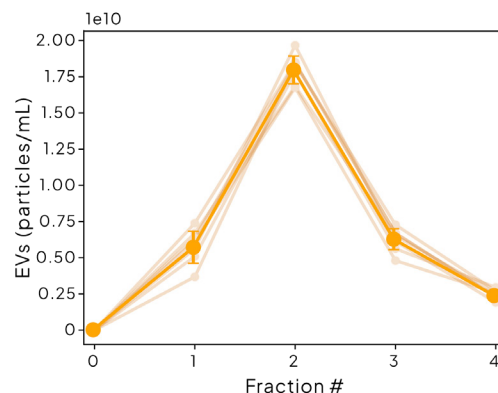
Optimize your fraction collection for your application.

- Run up to 8 columns in parallel
- Collect up to 12 fractions per column
- Wash up to 8 columns
- Compatible with different column types
- Programmable fraction collection sequences

Apex column reproducibility

The Apex SEC columns are optimized for a consistent drop speed, resulting in reproducible EV elution profile.

Pairing the Apex columns with the Ascent and Summit instruments further minimizes variability in EV elution across columns.



EV elution profile of 8 Apex 6B columns optimized for consistent drip speed. CV (EV yield) =4.3%

ASCENT INSTRUMENT SPECIFICATIONS		
SEC column compatibility	Apex MM / 4B / 6B; pick your own	
Compatible with qEV™ SEC columns (qEV™ is a trademark of Izon Science; not affiliated)	qEVoriginal / qEV1 / qEVsingle	
Units	Imperial	Metric
Dimensions (W x D x H)	16" x 15" x 13"	40 x 36 x 33 cm
Weight	30 lbs.	14 kg
Bottle capacity	0.25 U.S. gallons	1L
User Interface	5.0"	12.7 cm
Environmental temperature	50°F-75°F	10°C -24°C
Relative humidity	30-80% RH	
Input power	100~240 VAC (50-60 Hz)	
Power supply unit	24 VDC, 2.1A, 50 W	
Connectivity for updates	USB 3.1	
Chemical Compatibility	PBS, DI, 70% ethanol, dilute sodium hypochlorite	

Column Saver

Keeps columns safe

No more racing the clock — ColumnSaver protects your columns from drying during idle periods, so they're ready when you are.